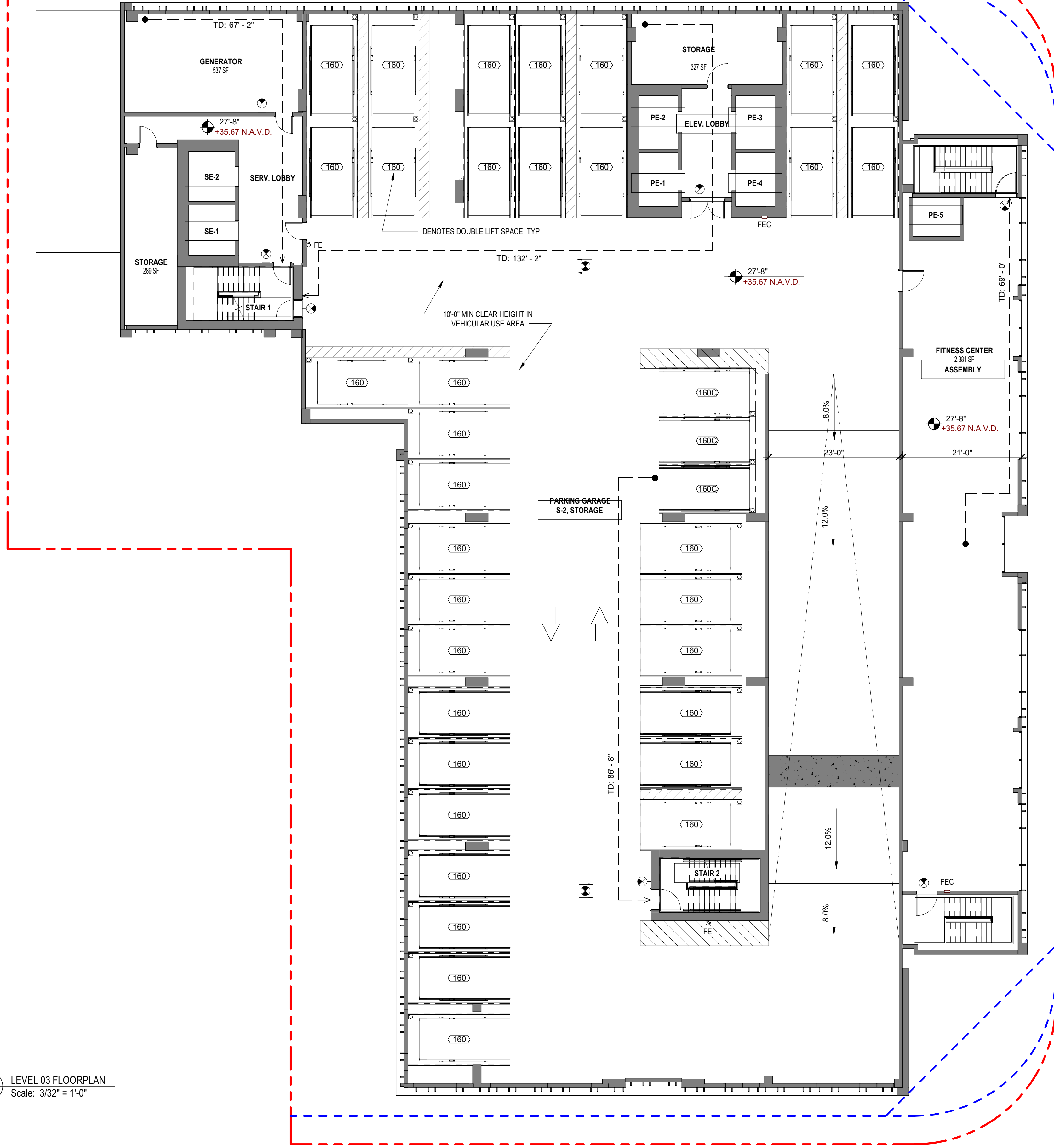


1 LEVEL 03 FLOORPLAN  
Scale: 3/32" = 1'-0"



**EGRESS LEGEND**

105'-6" TRAVEL DISTANCE  
EGRESS PATH OF TRAVEL

LED EXIT SIGN WITH BATTERY PACK, WALL MOUNT  
LED EXIT SIGN WITH BATTERY PACK, CEILING MOUNT  
EXIT SIGN DIRECTIONAL ARROWS  
EXIT SIGN LIGHT DIRECTION

FEC SURFACE MOUNTED TYPE ABC FIRE EXTINGUISHER & CABINET. EXTINGUISHERS SHALL BE CURRENTLY DATED AND TAGGED BY LICENSED FIRE EQUIPMENT COMPANY, AND LOCATED NOT FURTHER THAN 75 FEET OF TRAVEL DISTANCE TO AN EXTINGUISHER

FE SURFACE MOUNTED TYPE ABC FIRE EXTINGUISHER INSTALLED ON SUPPLIED BRACKET. EXTINGUISHERS SHALL BE CURRENTLY DATED AND TAGGED BY LICENSED FIRE EQUIPMENT COMPANY, AND LOCATED NOT FURTHER THAN 75 FEET OF TRAVEL DISTANCE TO AN EXTINGUISHER

**EGRESS NOTES**

- COORDINATE FIRE ALARM DEVICES AND PANELS WITH ELECTRICAL DRAWINGS
- REFER TO FIRE PROTECTION DRAWINGS FOR SPRINKLER HEAD LOCATIONS
- REFER TO ELECTRICAL DRAWINGS FOR FIRE ALARM DEVICE LOCATIONS
- REFER TO ELECTRICAL DRAWINGS FOR EMERGENCY LIGHT LOCATIONS
- ORDINARY HAZARD OF CONTENTS (NFPA 38.1.5.1)
- A FACTOR OF 0.2 INCHES OF WIDTH PER OCCUPANT HAS BEEN USED TO CALCULATE MINIMUM DOOR AND CORRIDOR EGRESS CAPACITY
- A FACTOR OF .3 INCHES OF WIDTH PER OCCUPANT HAS BEEN USED TO CALCULATE MINIMUM CLEAR WIDTH OF STAIRWAY EGRESS CAPACITY

AUTOMATIC EXTERNAL DEFIBRILLATORS (AED) AND STOP THE BLEED KITS (SBK) SHALL BE INSTALLED AS DEFINED IN NFPA 101, LIFE SAFETY CODE, ON EVERY OTHER FLOOR BEGINNING ON THE FIRST FLOOR. THE AED AND SBK SHALL BE PLACED NEAR THE ELEVATOR(S) BEGINNING IN THE FIRST-FLOOR LOBBY (FIRST FLOOR, THIRD FLOOR, FIFTH FLOOR, ETC.) REFER TO BROWARD FIRE CODE AMENDMENTS SECTION F-121 FOR ADDITIONAL INFORMATION FOR LOCATION, MOUNTING, INVENTORY, TRAINING, AND INSPECTION OF REQUIRED EQUIPMENT.

**GENERAL FLOORPLAN NOTES**

- ALL PARKING SPACES WILL BE DOUBLE STRIPED PER (155.5102.C.4)

**THIRD LEVEL PARKING**

34 DBL LIFTS (88 STANDARD SPACES)  
3 DBL LIFTS (6 COMPACT SPACES)  
74 SPACES TOTAL

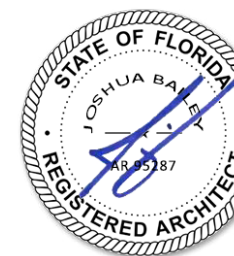
DESIGNED	DRAWN	CHECKED
NH	NH	JY

R E V I S I O N S

DATE: 9.27.2023  
COMM: 23008

POMPANO HOTEL

101 S. OCEAN BLVD  
POMPANO BEACH, FL 33062



Digitally signed  
by Joshua D  
Bailey  
Date:  
2023.12.15  
14:49:27-05'00'

LEVEL 3

DRC SET

AR-103